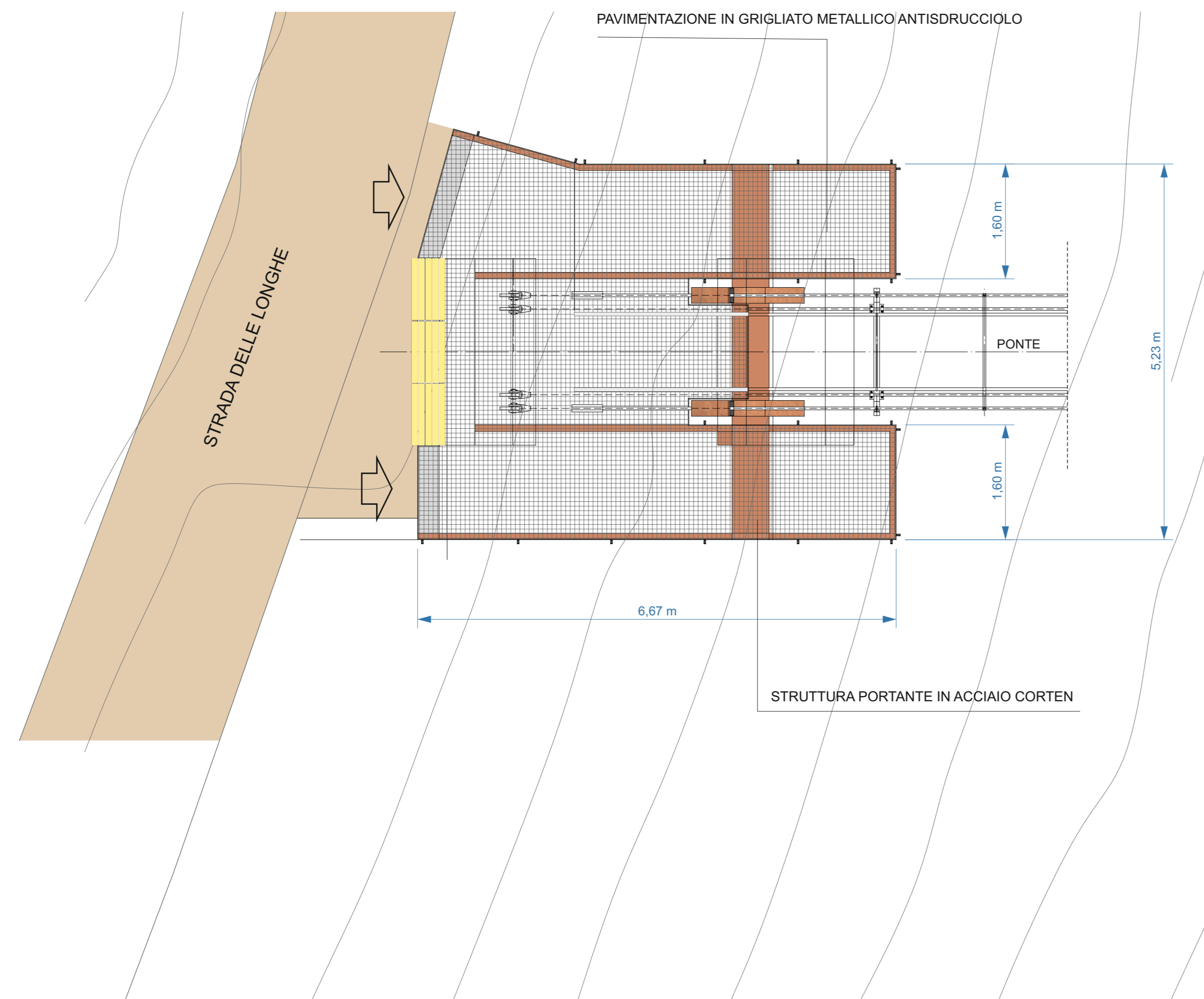


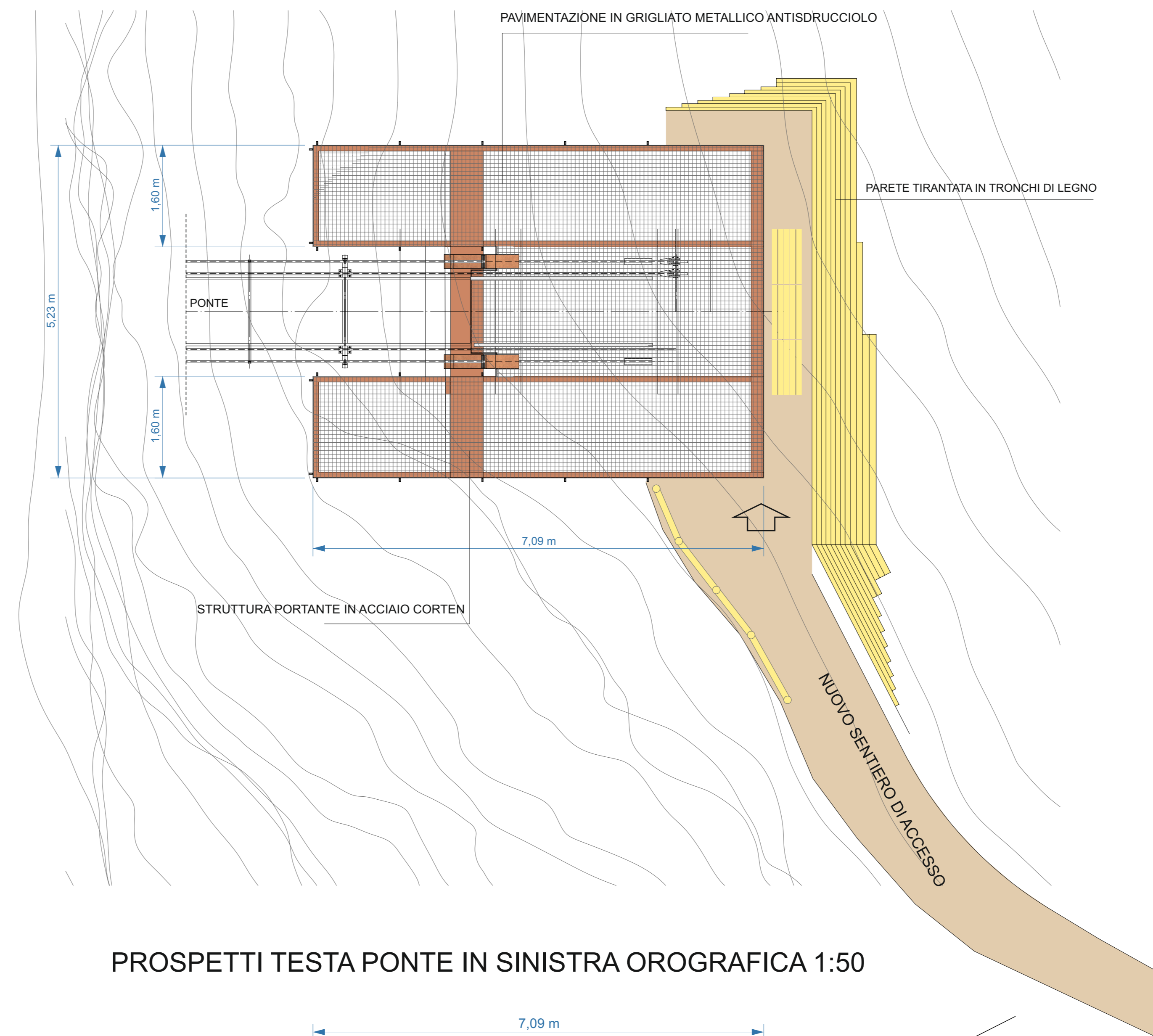


# PROGETTO PRELIMINARE

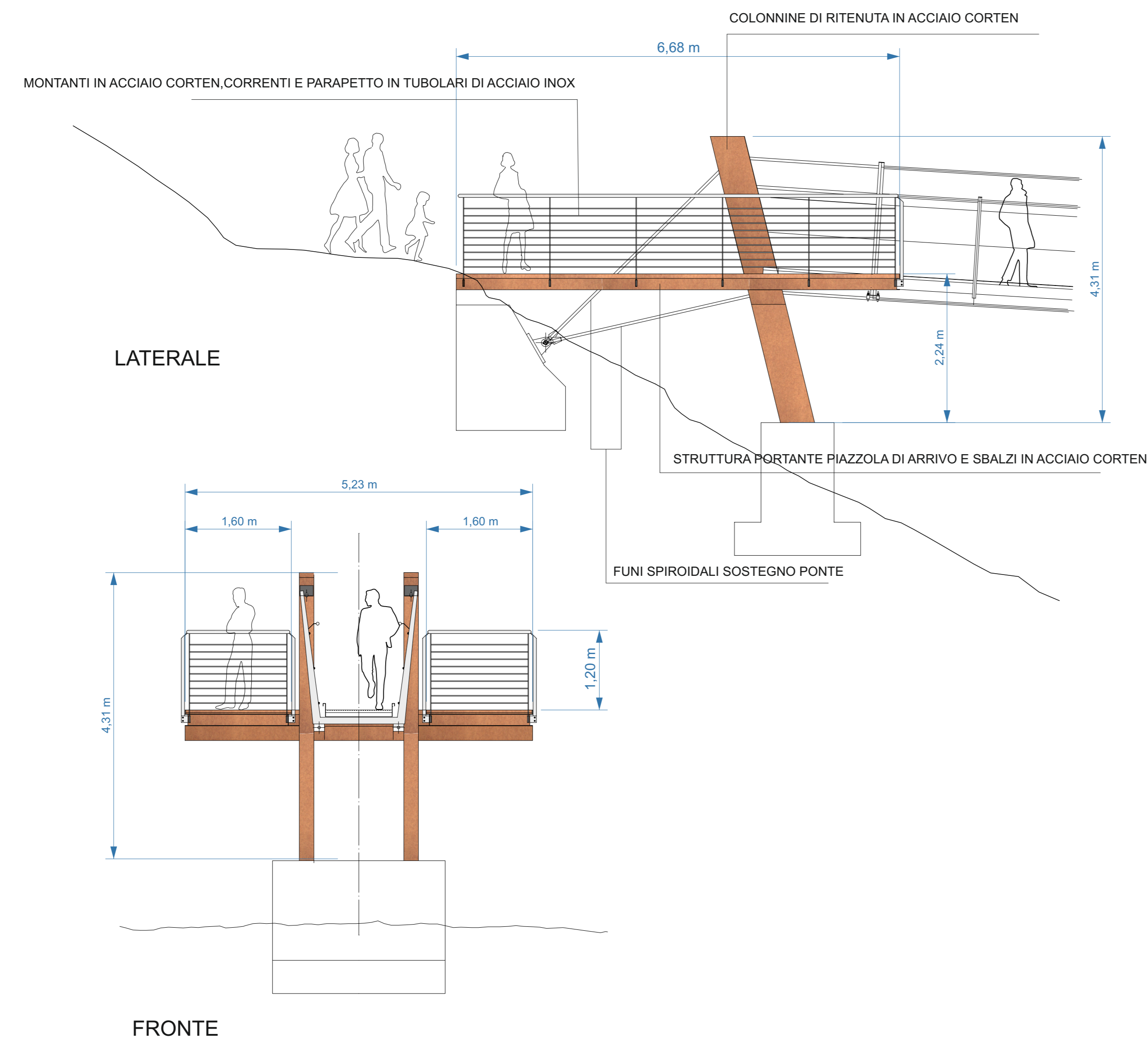
PIAZZOLA ACCESSO PONTE IN DESTRA OROGRAFICA 1:50



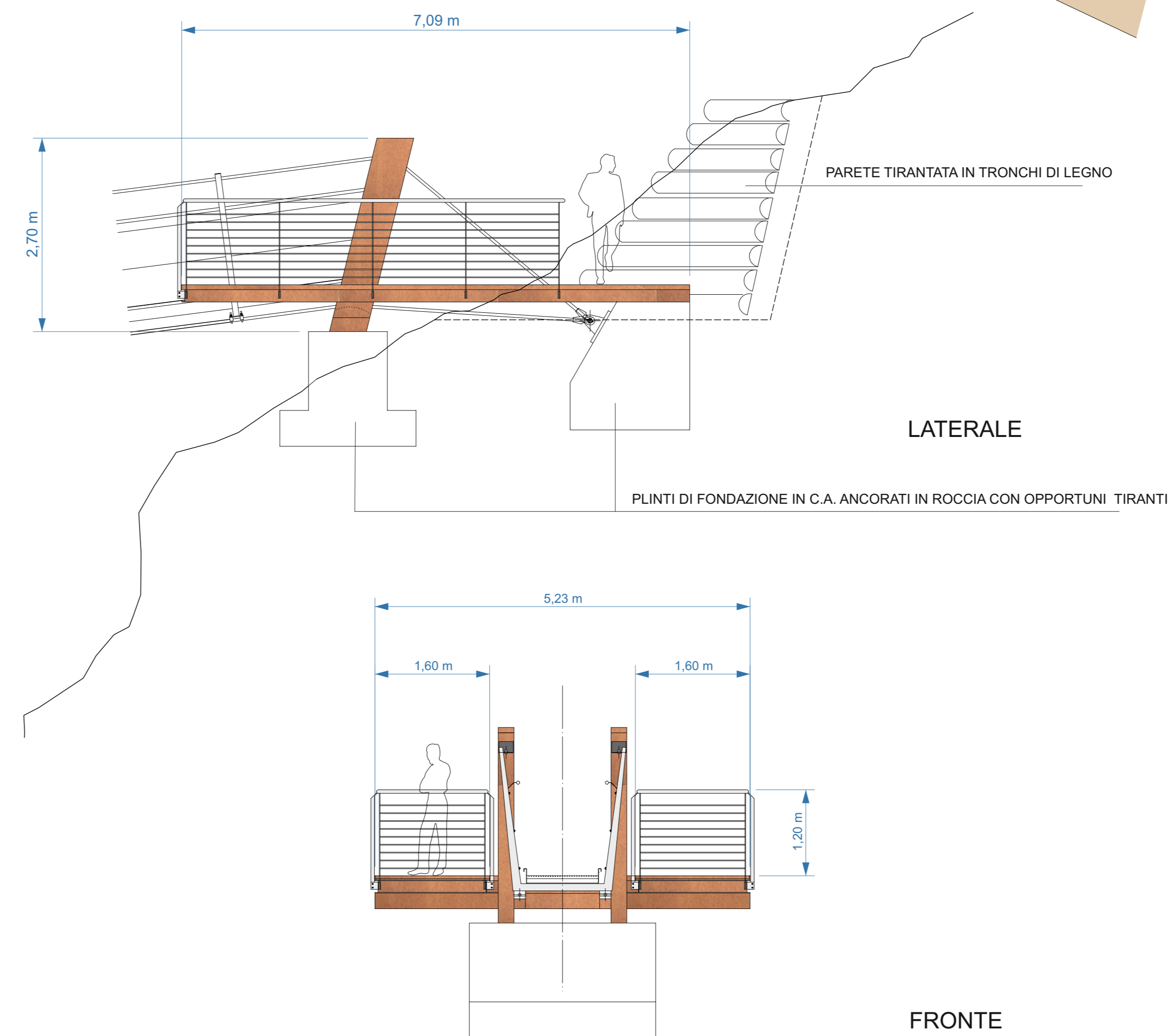
PIAZZOLA ACCESSO PONTE IN SINISTRA OROGRAFICA 1:50



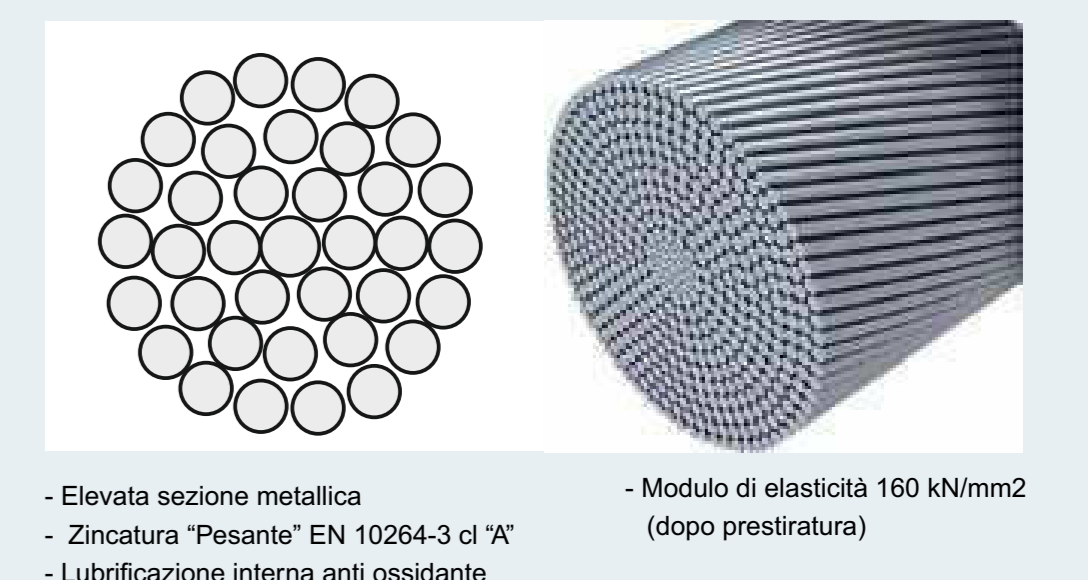
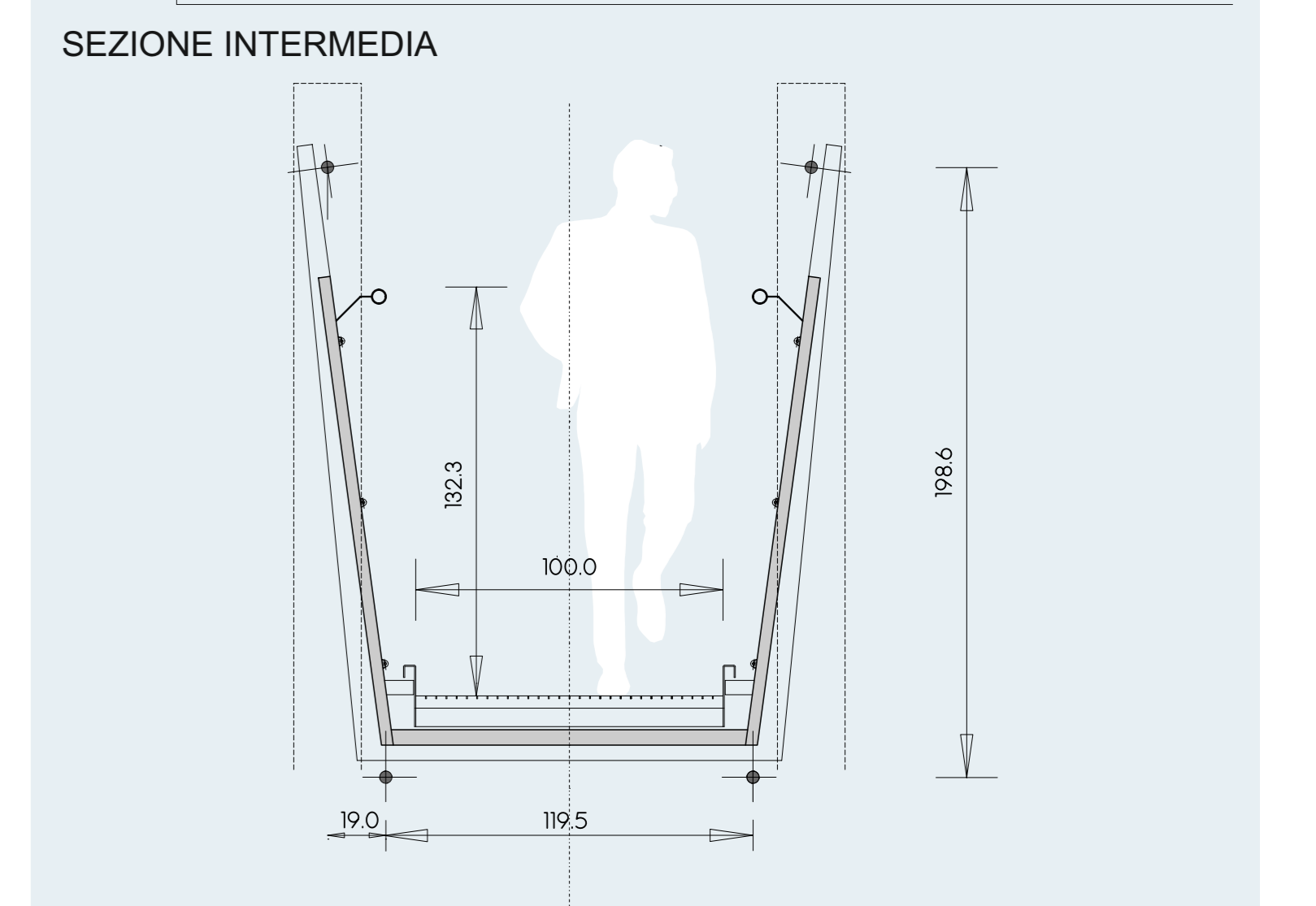
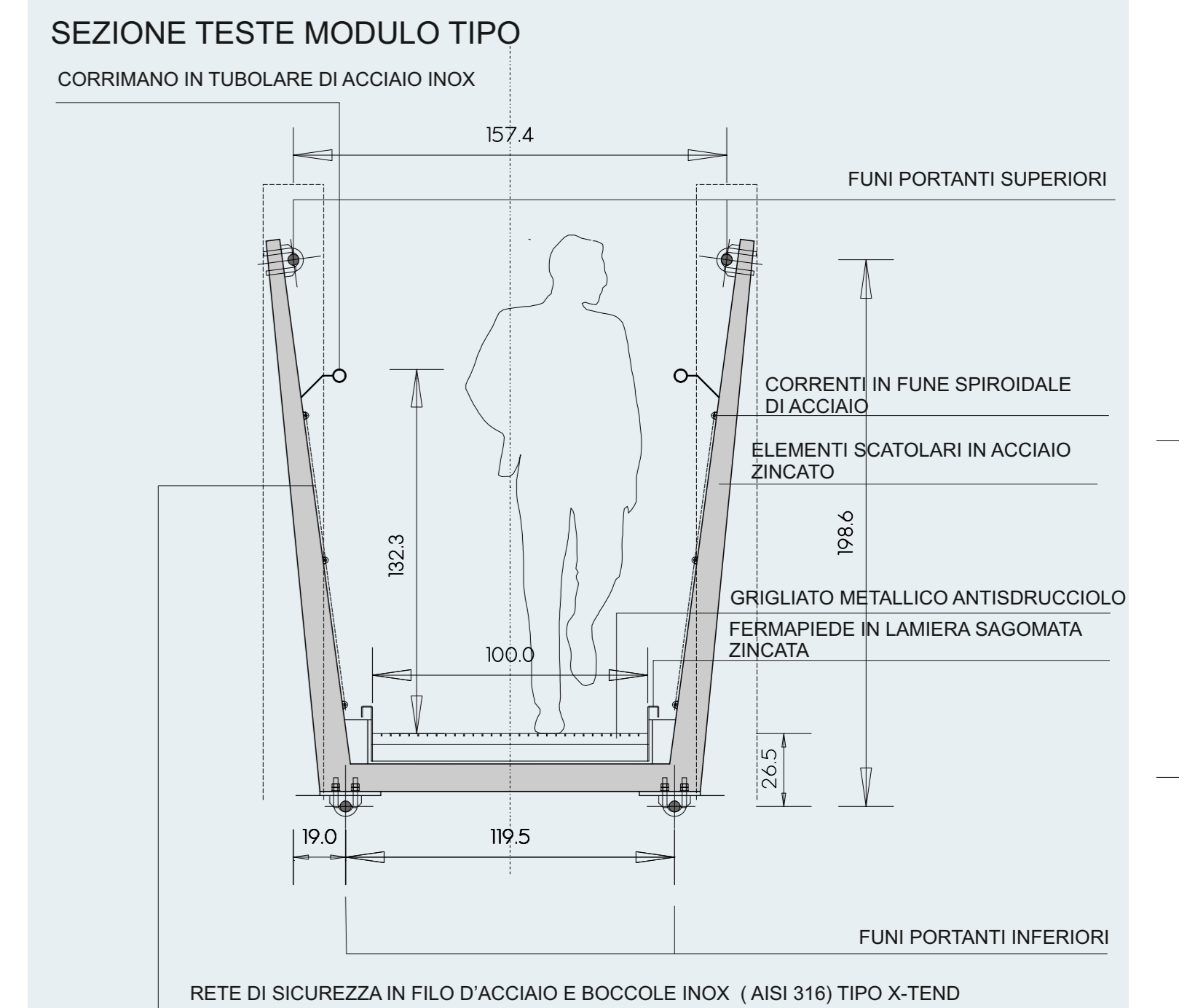
PROSPETTI TESTA PONTE IN DESTRA OROGRAFICA 1:50



PROSPETTI TESTA PONTE IN SINISTRA OROGRAFICA 1:50



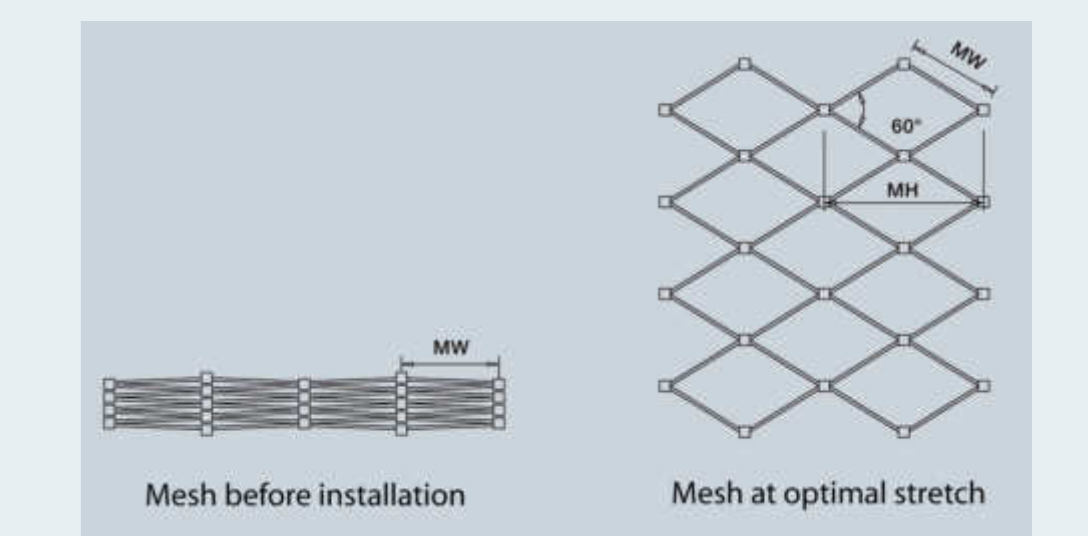
SEZIONI TIPO PONTE 1:20



- Elevata sezione metallica  
 - Zincatura "Preserlar" EN 10264-3 di "X"  
 - Lubrificazione interna anti ossidante

- Modulo di elasticità 160 kN/mm<sup>2</sup> (dopo pre-tiratura)

**FUNE SPIROIDALE IN ACCIAIO PER IMPIEGHI STRUTTURALI**



**RETE IN FILO DI ACCIAIO INOX**





# PROGETTO PRELIMINARE



VISTE PONTE - RENDERING

