



PROGETTO PRELIMINARE



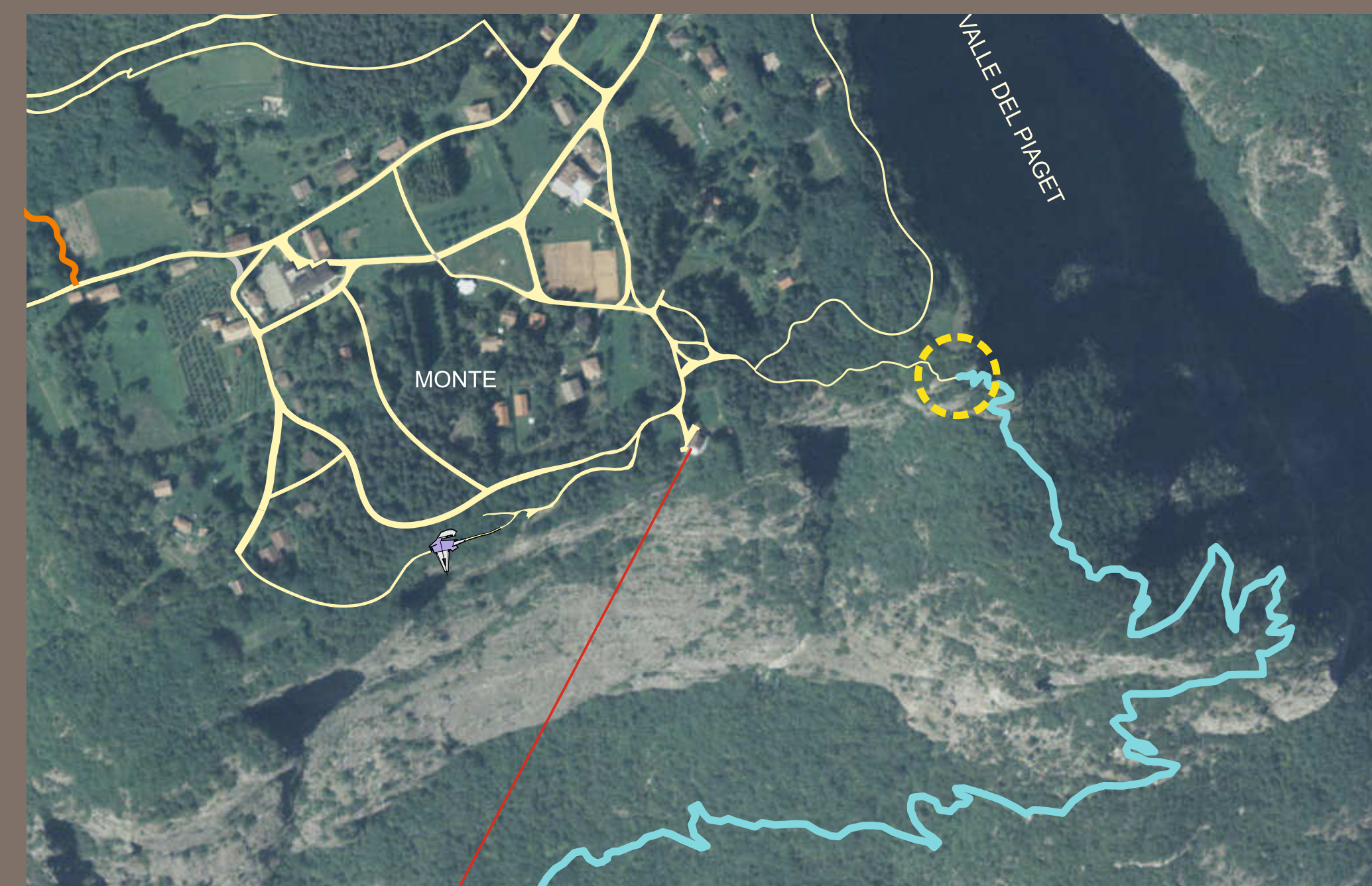
PUNTO DI ARRIVO SENTIERO 500



SCHEMA PIATTAFORMA DI OSSERVAZIONE

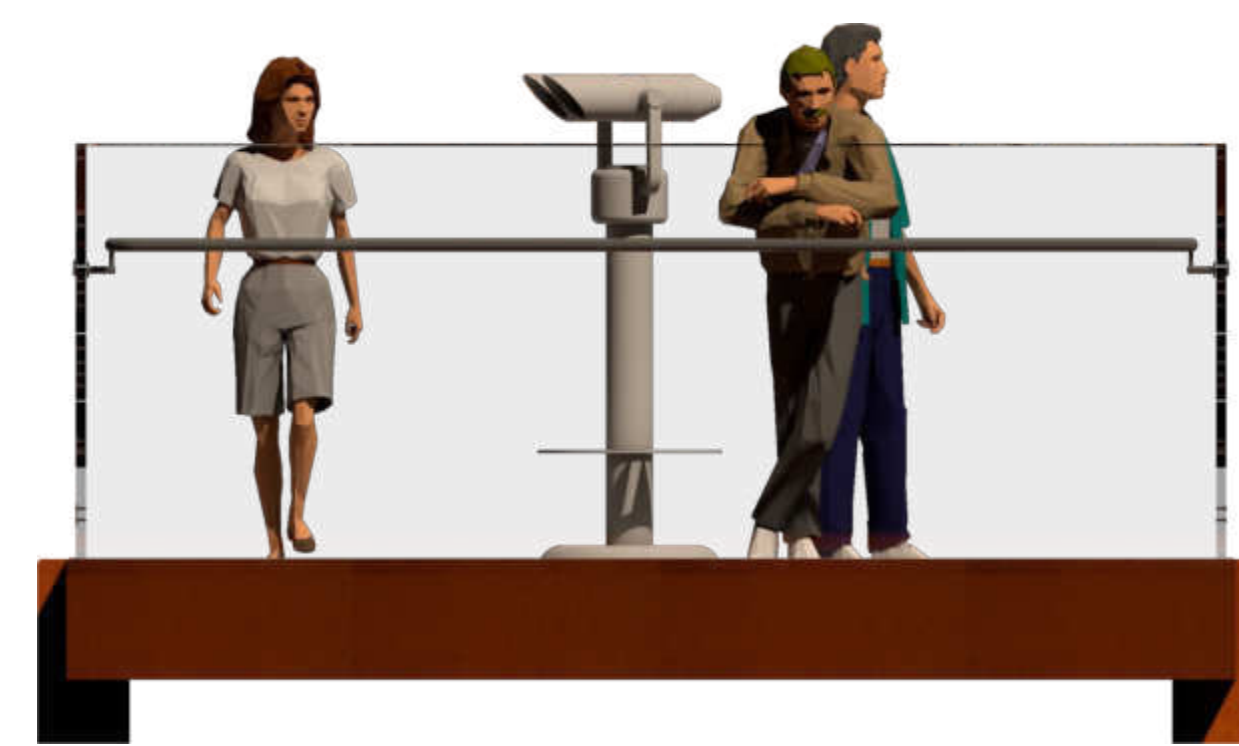


SCHEMA PIATTAFORMA DI OSSERVAZIONE



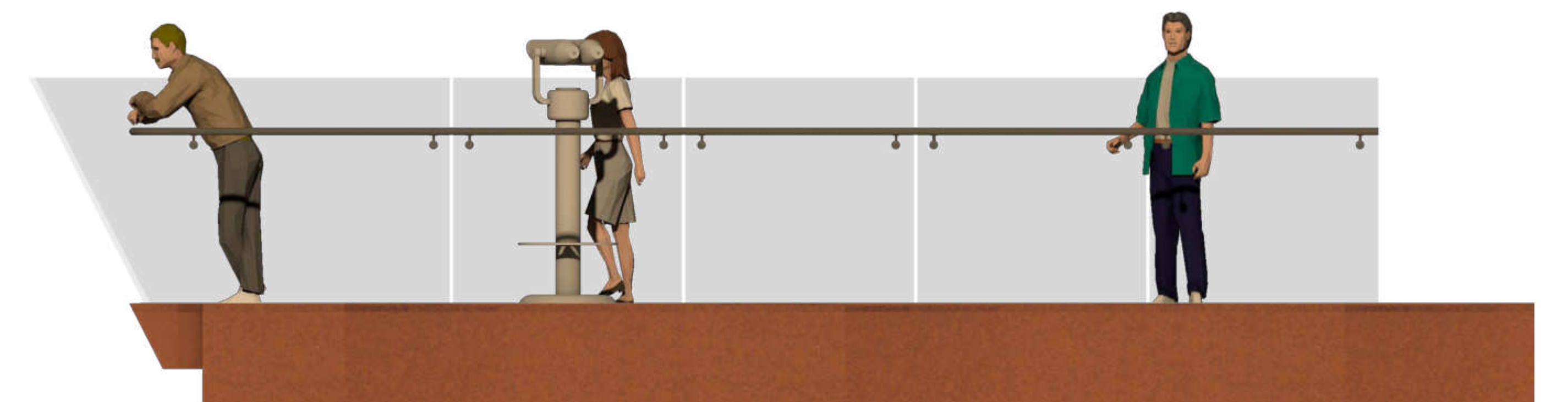
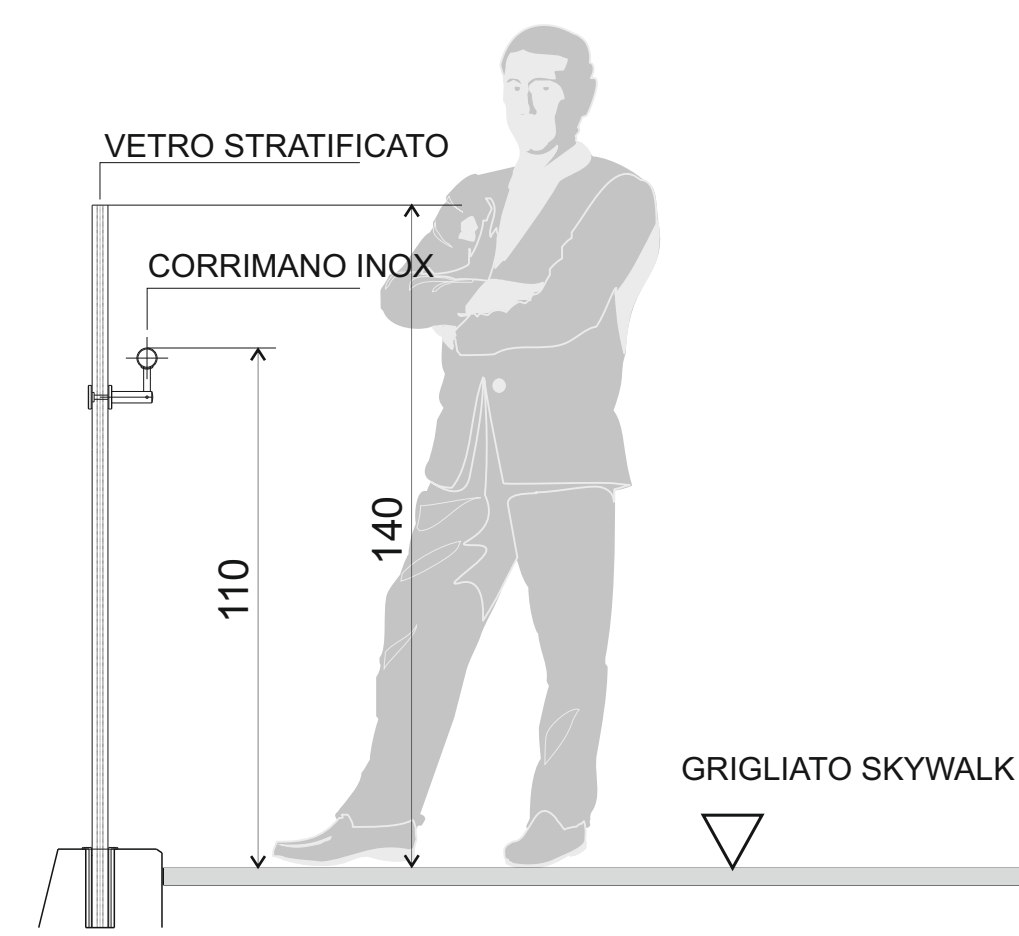
- SENTIERO 500
- FUNIVIA
- VIABILITA' MONTE
- AREA IN OGGETTO

VISTA IN PIANTA



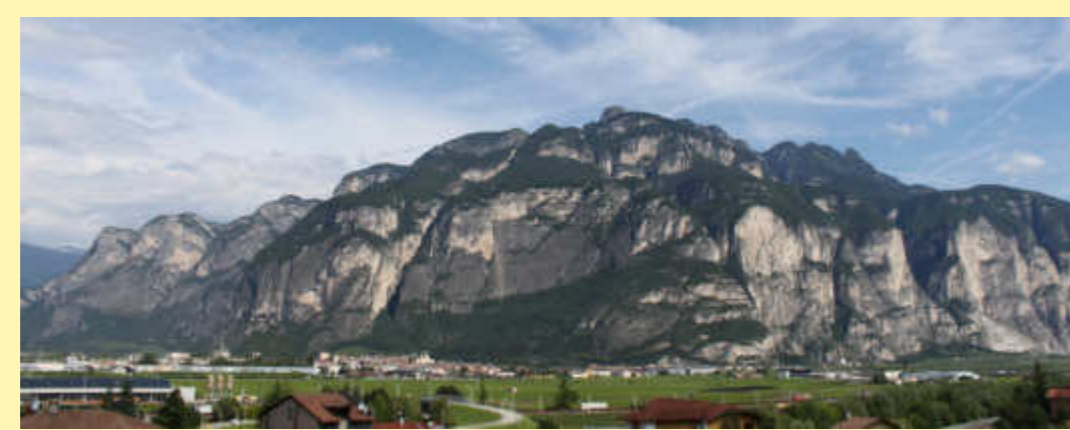
VISTA FRONTALE

PARTICOLARE PARAPETTO



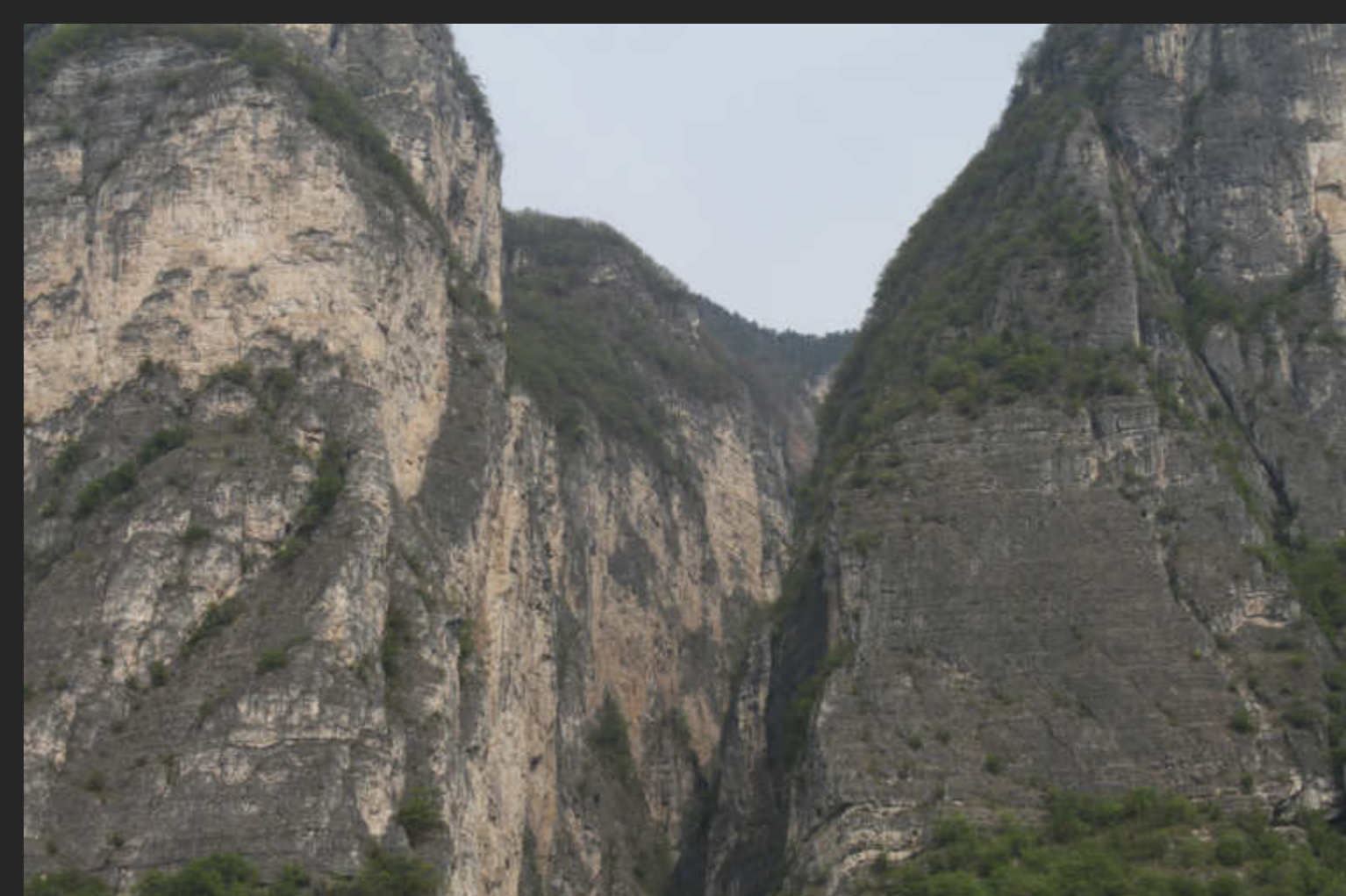
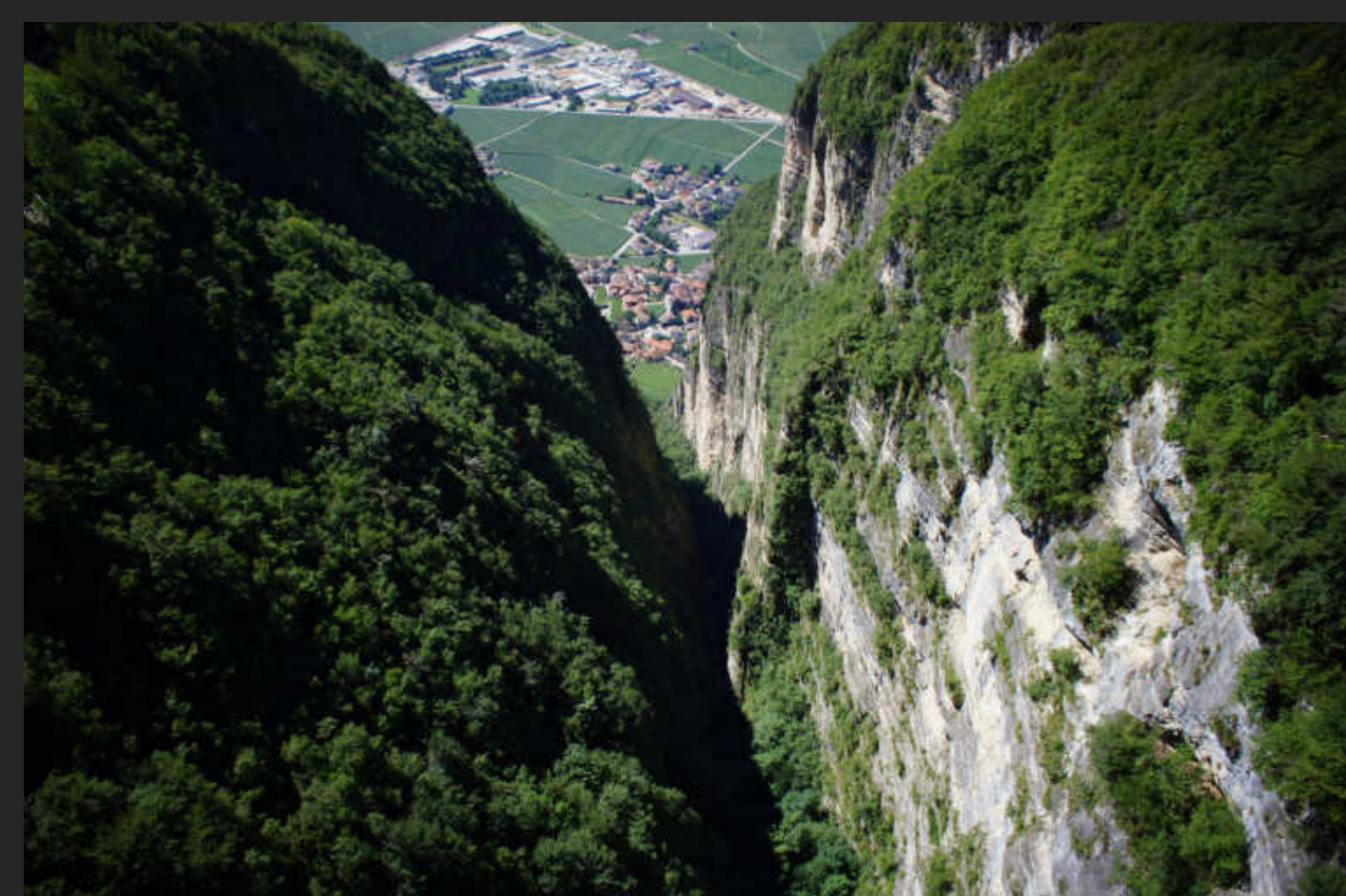
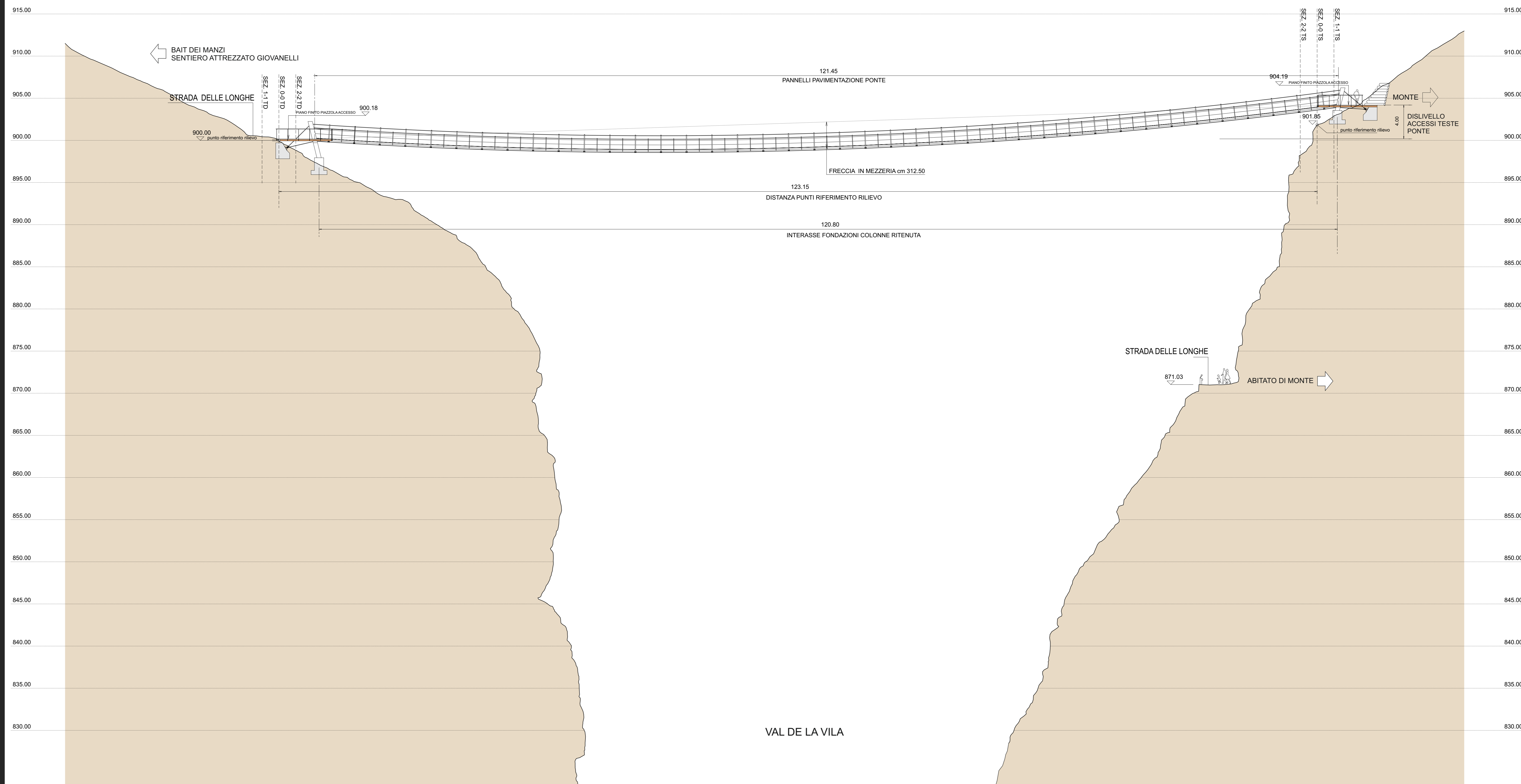
VISTA LATERALE

- CORRIMANO TUBOLARE IN ACCIAIO INOX SATINATO
- STRUTTURA IN ACCIAIO CORTEN
- BINOCOLO PANORAMICO
- PAVIMENTAZIONE IN PANNELLI DI GRIGLIATO METALLICO ZINCATO IN ESECUZIONE ANTISDRUCCIOLO
- RIQUADRO IN VETRO TEMPRATO STRATIFICATO
- PANNELLI IN VETRO STRATIFICATO



PROGETTO PRELIMINARE

PROSPETTO PONTE SOSPESO IN VAL DE LA VILA 1:200



SCORCI VAL DE LA VILA



RILIEVO PARETI VERSANTI IN DESTRA E SINISTRA OROGRAFICA CON LASER SCANNER